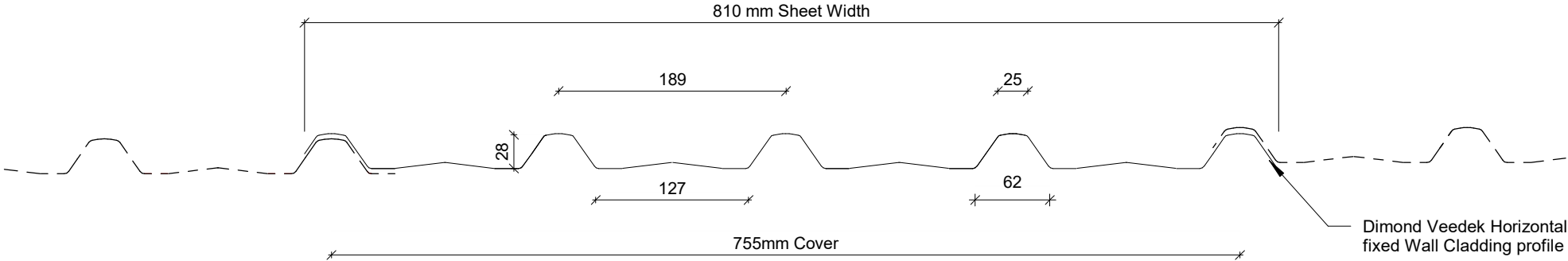


DETAILS:

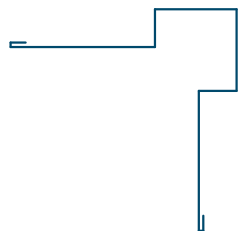
REV: DATE:

VRHC00	Cover Sheet	1	July 2025
VRHC01	Profile Summary	1	July 2025
VRHC02	Typical Flashing Details	1	July 2025
VRHC03	Barge Flashing Detail	1	July 2025
VRHC04	External Corner Detail	1	July 2025
VRHC05	Internal Corner Detail	1	July 2025
VRHC06	Base Detail	1	July 2025
VRHC07	Soffit Detail	1	July 2025
VRHC08	Window/ Door Head Detail	1	July 2025
VRHC09	Window/ Door Jamb Detail	1	July 2025
VRHC10	Window Sill Detail	1	July 2025
VRHC11	Meterbox Head Detail	1	July 2025
VRHC12	Meterbox Jamb Detail	1	July 2025
VRHC13	Meterbox Sill Detail	1	July 2025
VRHC14	Pipe Penetration Detail	1	July 2025
VRHC15	Cladding to Concrete Junction Detail	1	July 2025
VRHC16	Cladding to Brick Junction Detail	1	July 2025
VRHC17	Cladding to Panel Junction Detail	1	July 2025
VRHC18	3D Window Flashing Detail	1	July 2025

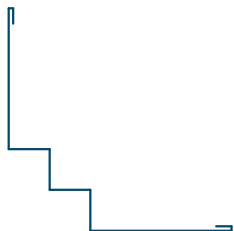
PROFILE OVERVIEW	
MINIMUM PITCH	3°
RIB TYPE	Low
RIBS PER SHEET	5 Ribs per sheet
WIDTH	755mm Cover, 810mm Sheet



Profile Summary



External Corner Flashing



Internal Corner Flashing



Window Head Flashing



Barge Flashing



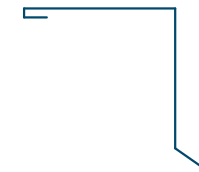
Window Sill Flashing



Base Flashing



Window Jamb Flashing

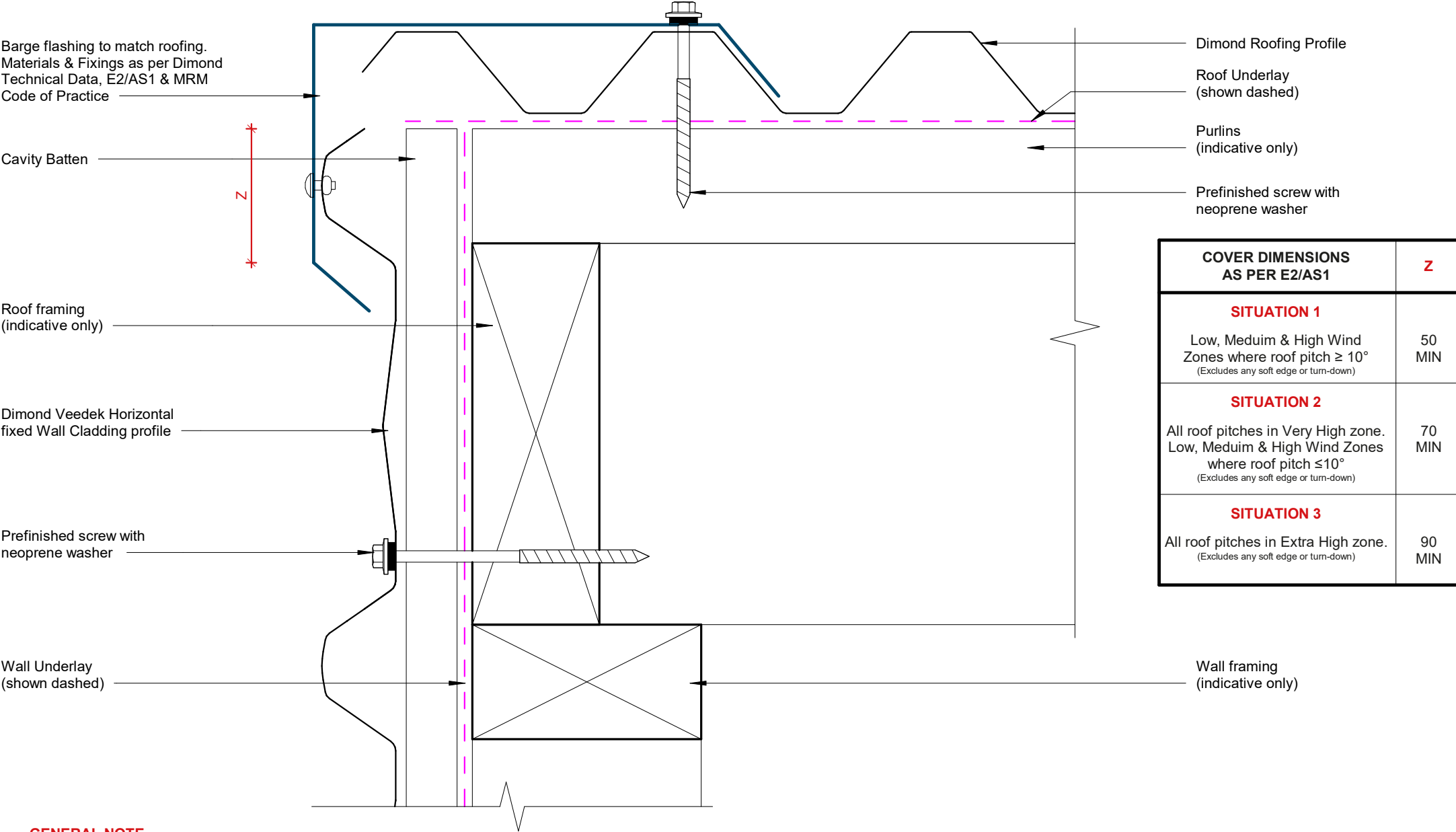


Soffit Flashing

Typical Flashing Details

Rev: 1

Veedek Residential Horizontal Cladding

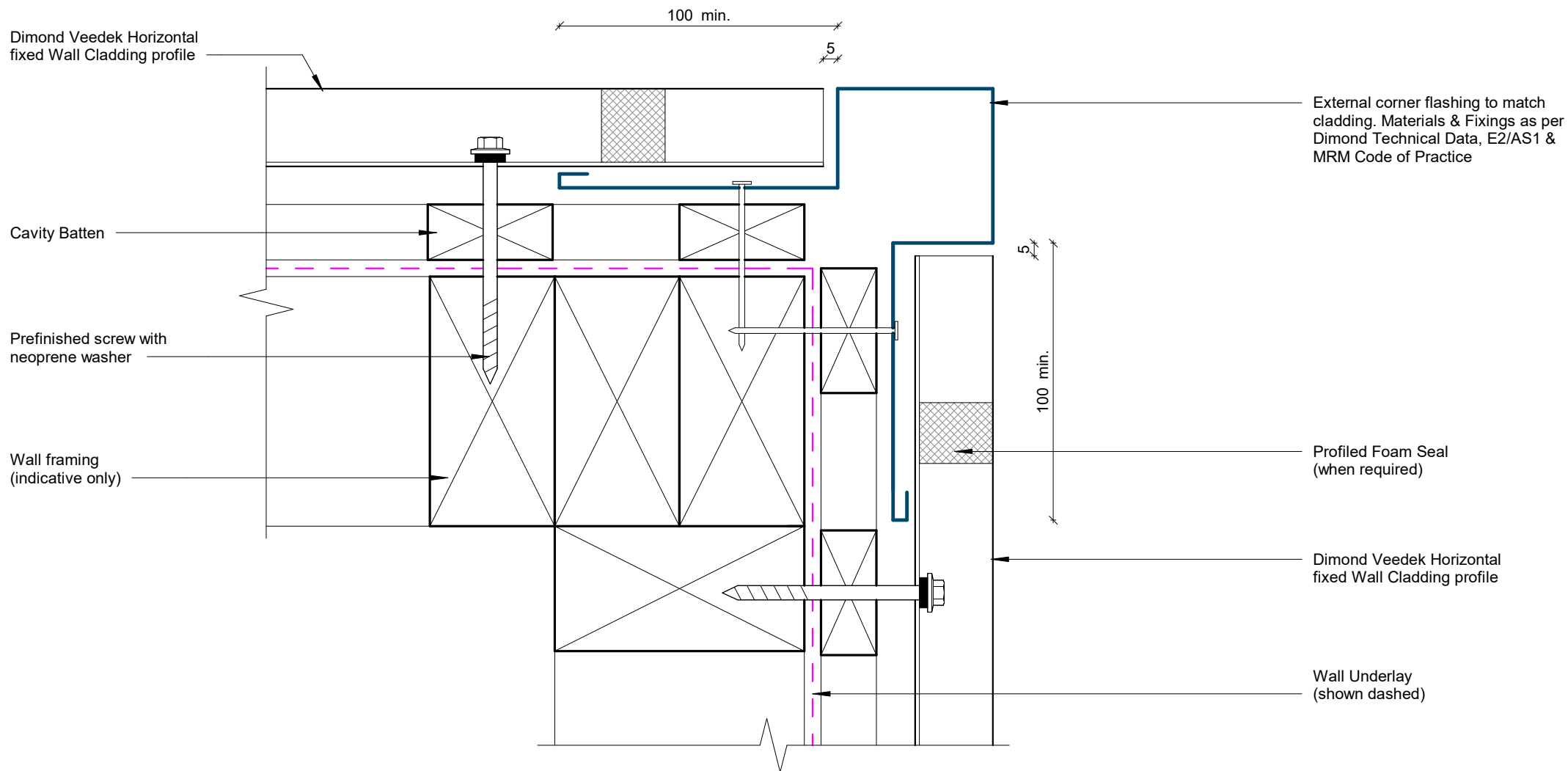


COVER DIMENSIONS AS PER E2/AS1	Z
SITUATION 1 Low, Medium & High Wind Zones where roof pitch $\geq 10^\circ$ (Excludes any soft edge or turn-down)	50 MIN
SITUATION 2 All roof pitches in Very High zone. Low, Medium & High Wind Zones where roof pitch $\leq 10^\circ$ (Excludes any soft edge or turn-down)	70 MIN
SITUATION 3 All roof pitches in Extra High zone. (Excludes any soft edge or turn-down)	90 MIN

GENERAL NOTE

Cavity battens or timber framing that contain copper must be separated from steel cladding by a strip of wall or roof underlay or DPC.

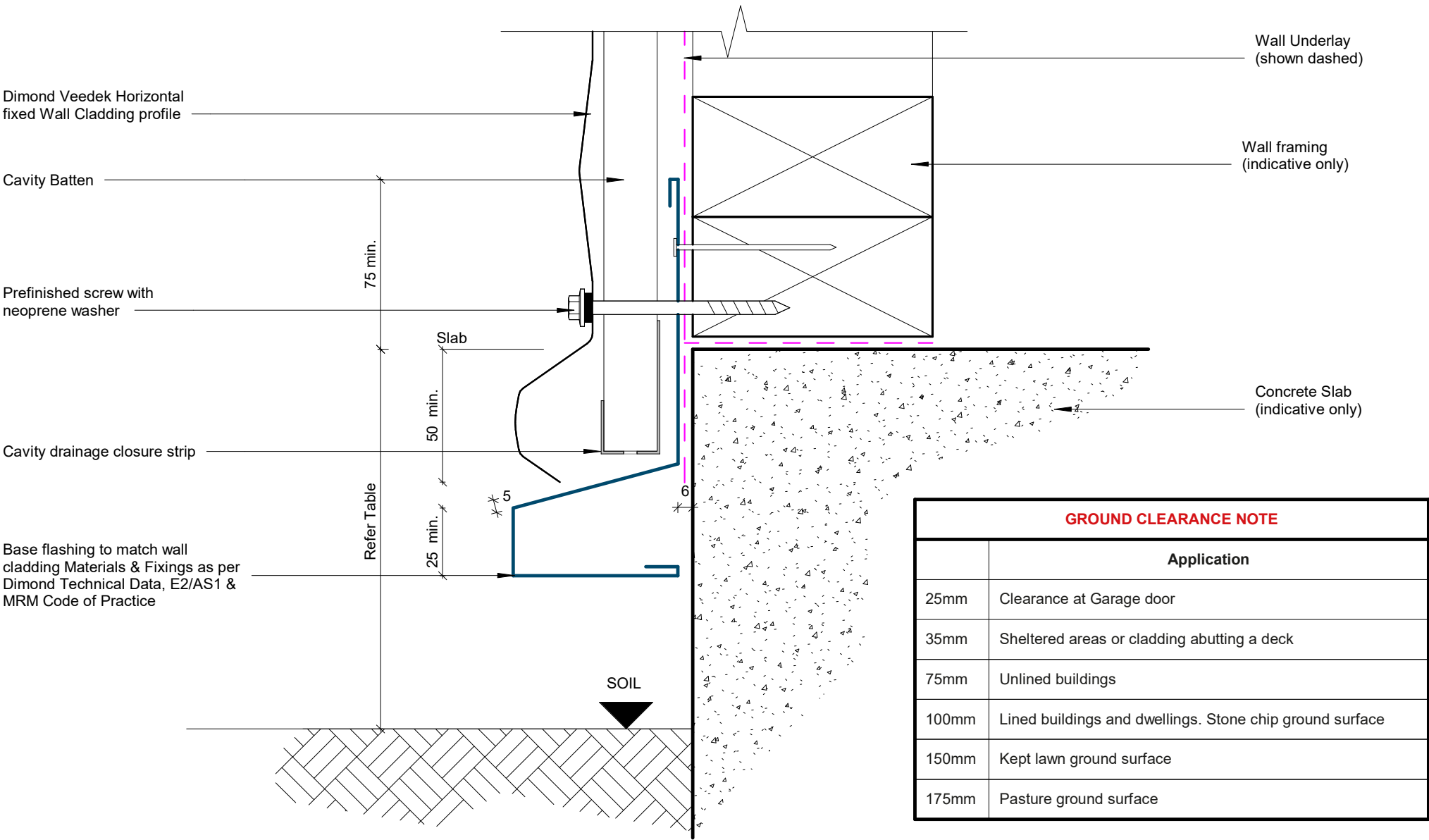
Barge Flashing Detail



GENERAL NOTE

Cavity battens or timber framing that contain copper must be seperated from steel cladding by a strip of wall or roof underlay or DPC.

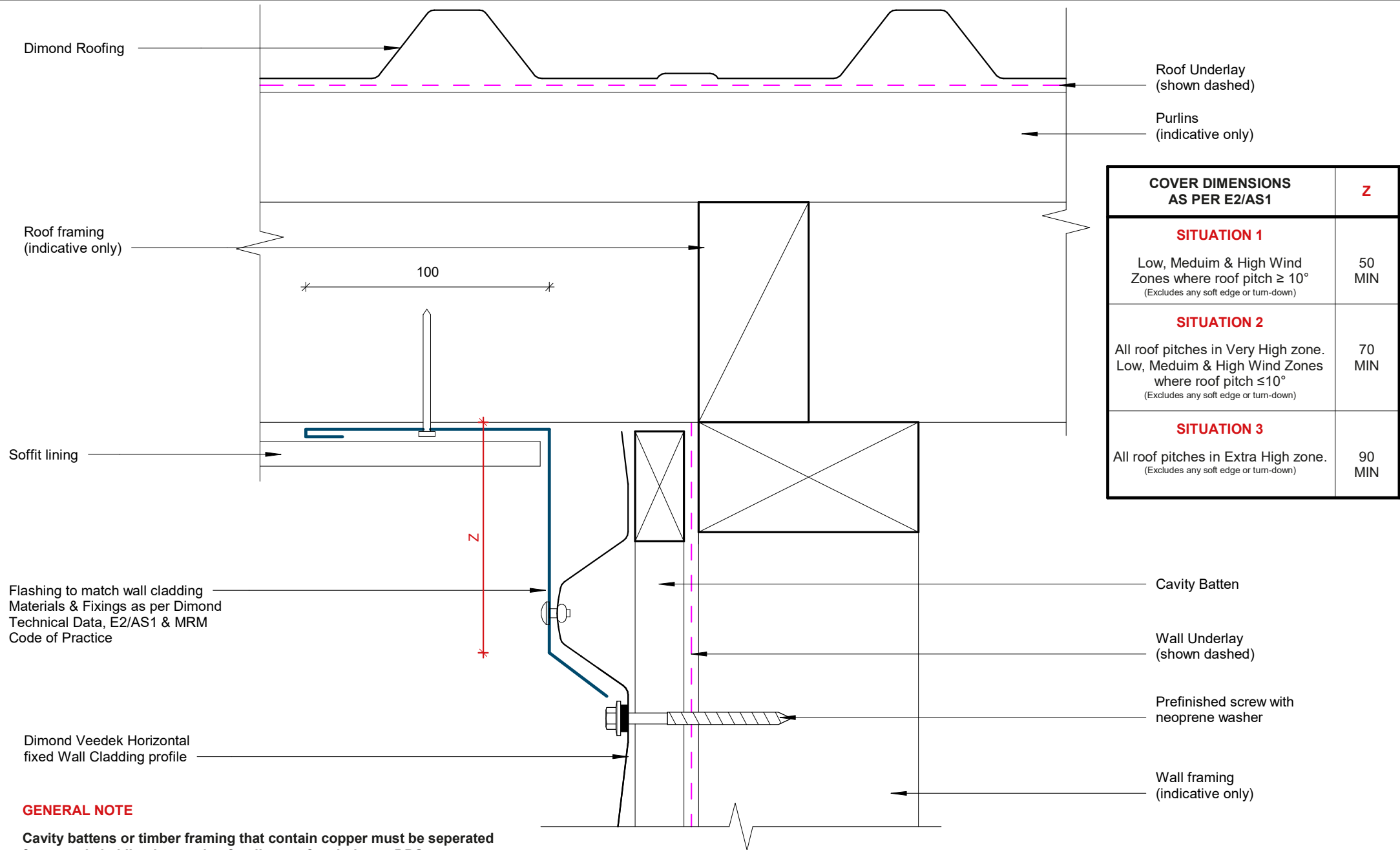
External Corner Detail



GENERAL NOTE

Cavity battens or timber framing that contain copper must be seperated from steel cladding by a strip of wall or roof underlay or DPC.

Base Detail



Soffit Detail

Dimond Veedek Horizontal fixed
Wall Cladding profile

Prefinished screw with
neoprene washer

Cavity Batten

Cavity drainage closure strip

Head flashing min 15° fall to top.
Materials & Fixings as per Dimond
Technical Data, E2/AS1 & MRM
Code of Practice

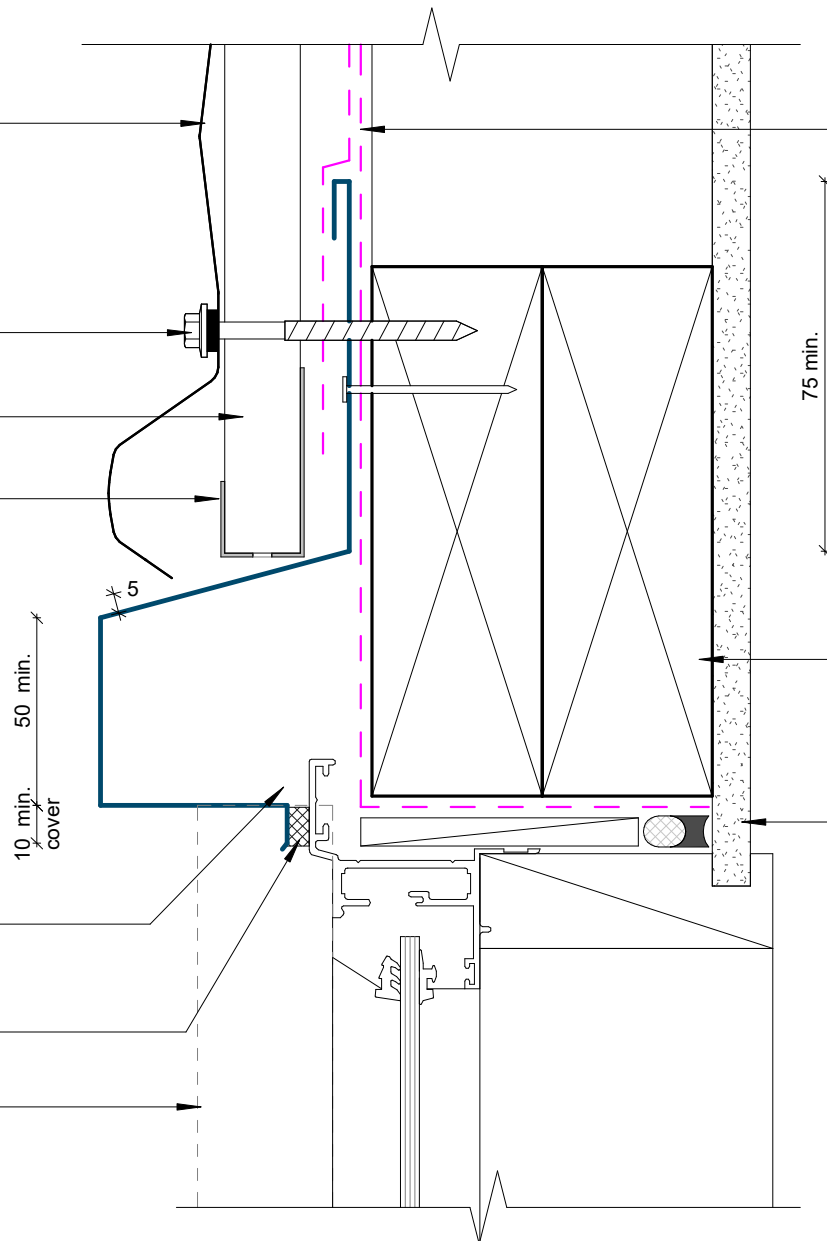
Sealant used for very high
wind zones and above

Line of jamb flashing behind

Wall Underlay
(shown dashed)

Wall framing
(indicative only)

Wall lining
(indicative only)



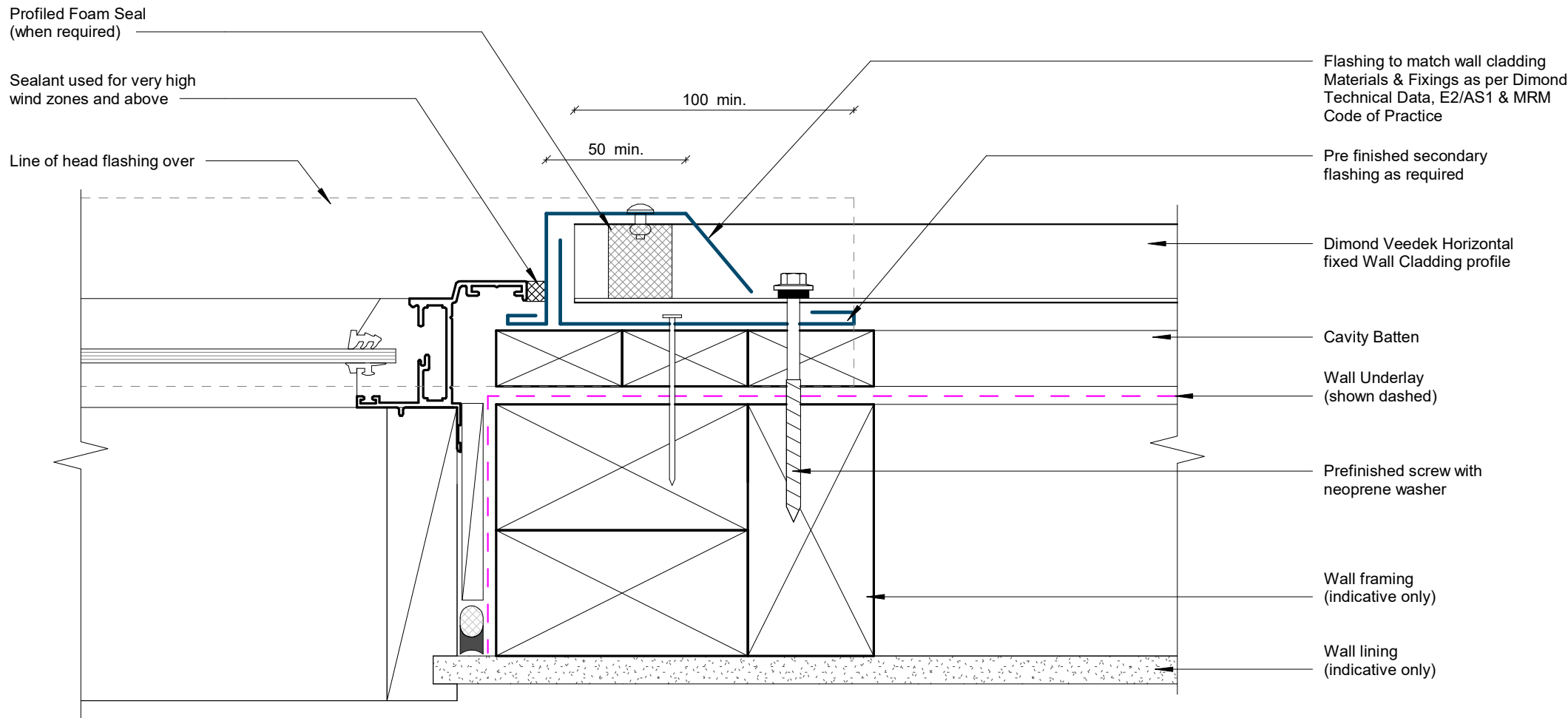
GENERAL NOTE

Cavity battens or timber framing that contain copper must be seperated from steel cladding by a strip of wall or roof underlay or DPC.

Window/ Door Head Detail

Rev: 1

Veedek Residential Horizontal Cladding



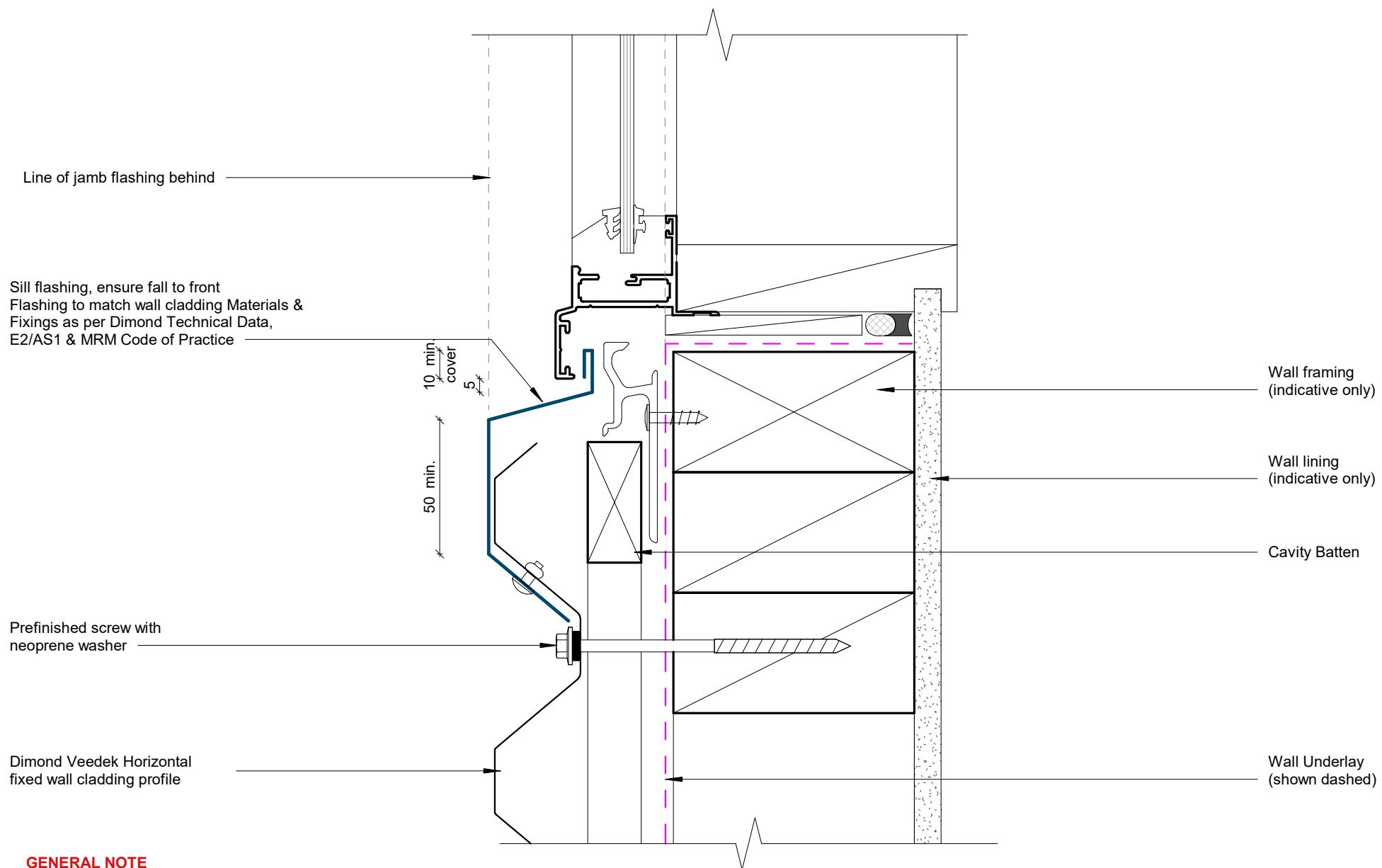
GENERAL NOTE

Cavity battens or timber framing that contain copper must be separated from steel cladding by a strip of wall or roof underlay or DPC.

Window/ Door Jamb Detail

Rev: 1

Veedek Residential Horizontal Cladding



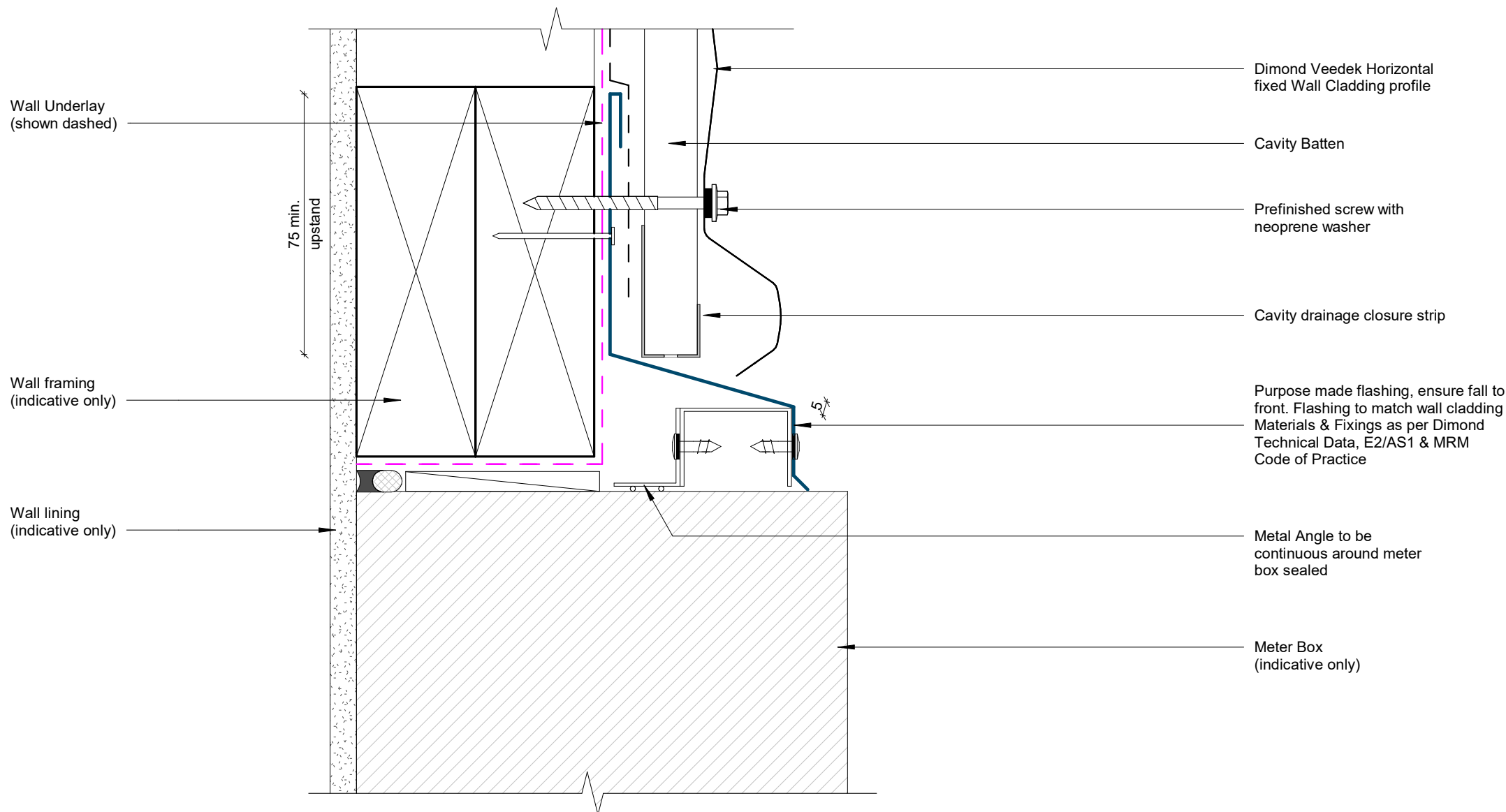
GENERAL NOTE

Cavity battens or timber framing that contain copper must be seperated from steel cladding by a strip of wall or roof underlay or DPC.

Window Sill Detail

Rev: 1

Veedek Residential Horizontal Cladding



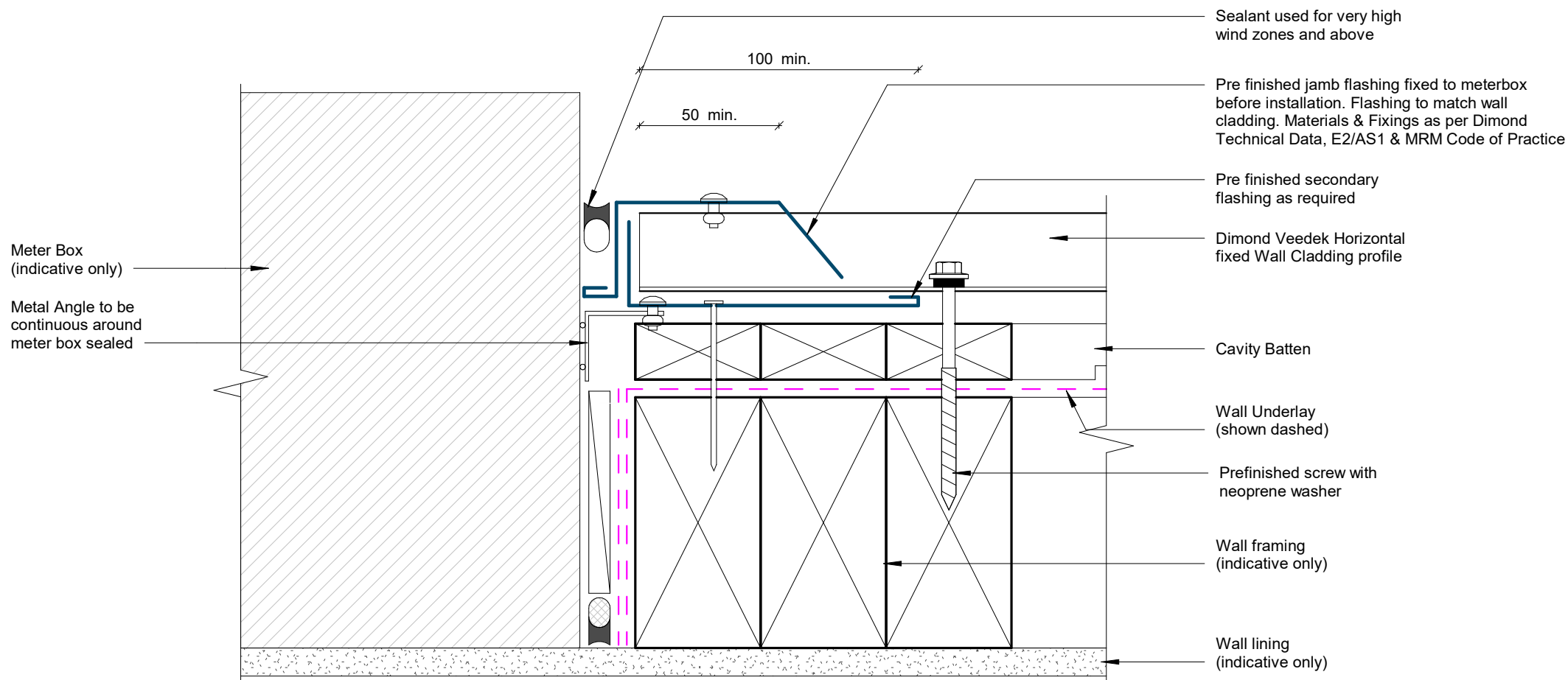
GENERAL NOTE

Cavity battens or timber framing that contain copper must be seperated from steel cladding by a strip of wall or roof underlay or DPC.

Meterbox Head Detail

Rev: 1

Veedek Residential Horizontal Cladding



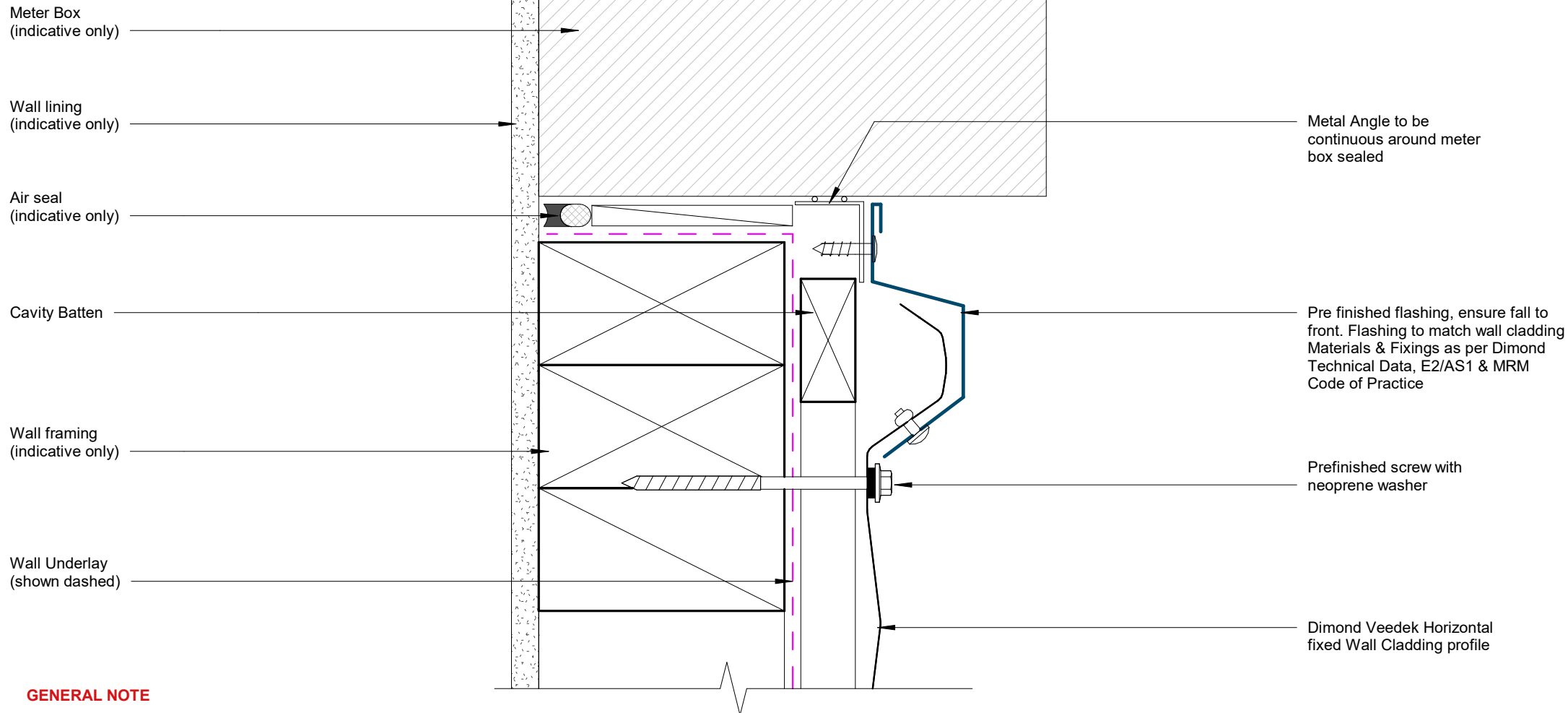
GENERAL NOTE

Cavity battens or timber framing that contain copper must be separated from steel cladding by a strip of wall or roof underlay or DPC.

Meterbox Jamb Detail

Rev: 1

Veedek Residential Horizontal Cladding



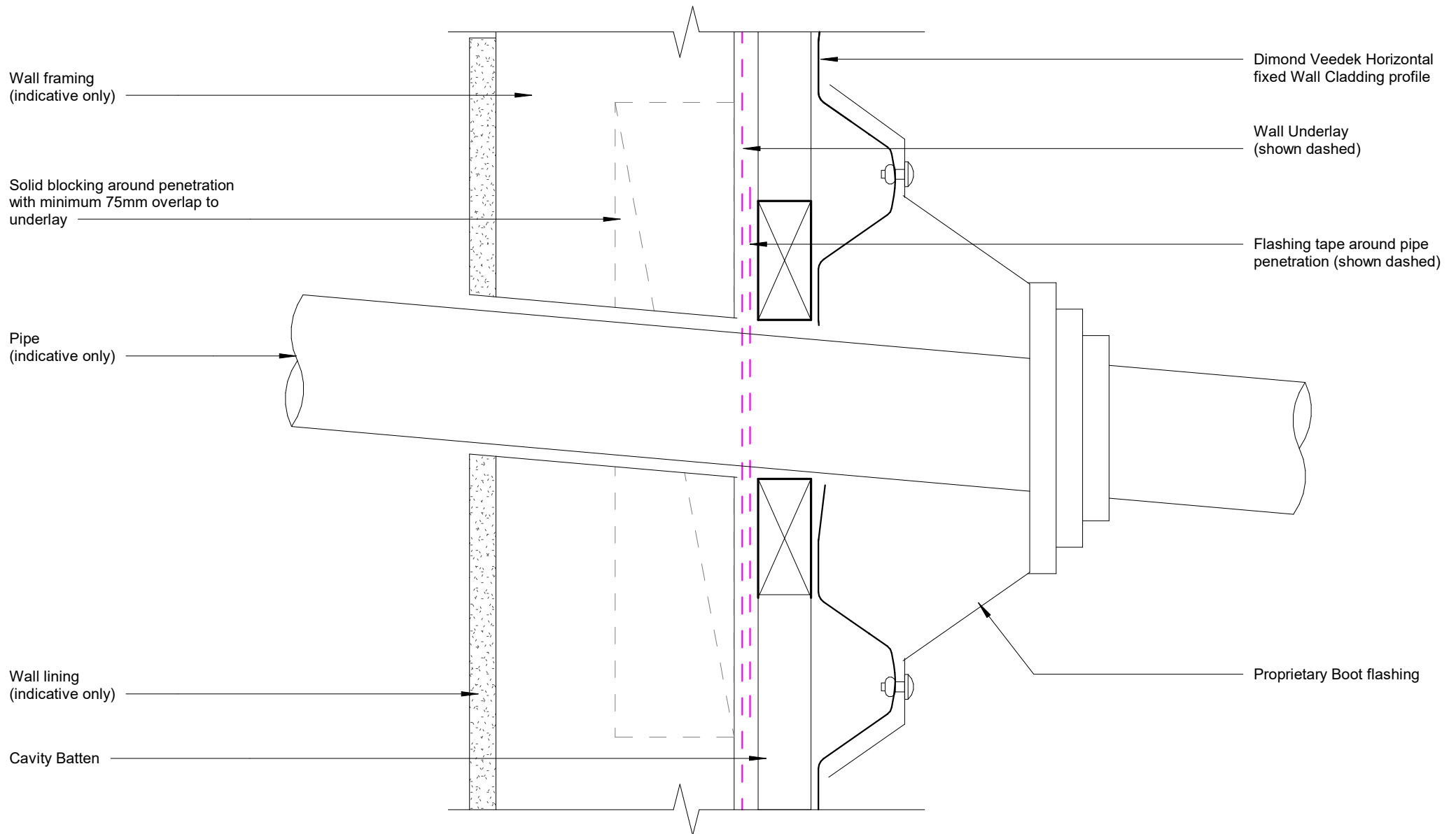
GENERAL NOTE

Cavity battens or timber framing that contain copper must be seperated from steel cladding by a strip of wall or roof underlay or DPC.

Meterbox Sill Detail

Rev: 1

Veedek Residential Horizontal Cladding



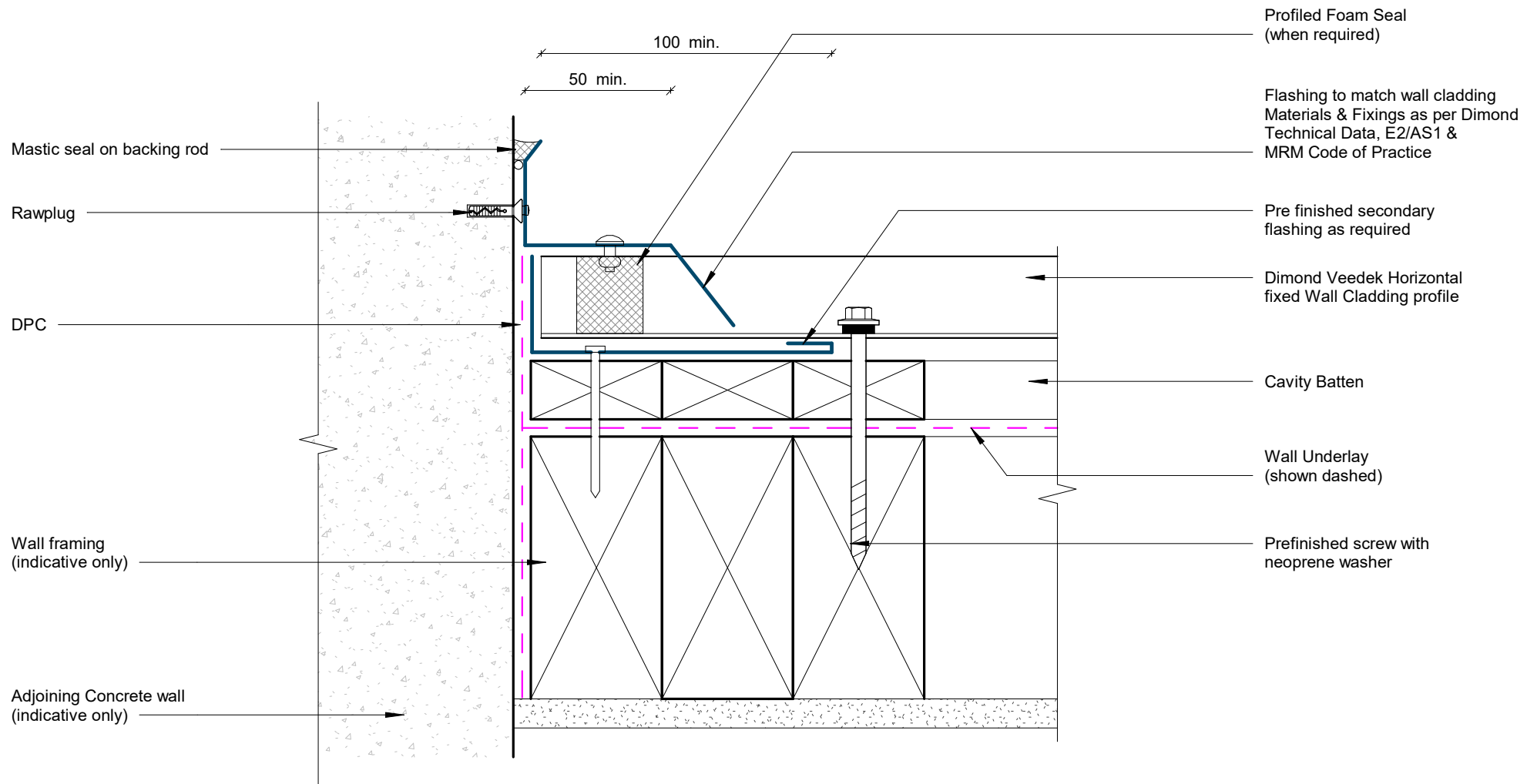
GENERAL NOTE

Cavity battens or timber framing that contain copper must be seperated from steel cladding by a strip of wall or roof underlay or DPC.

Pipe Penetration Detail

Rev: 1

Veedek Residential Horizontal Cladding



GENERAL NOTE

Cavity battens or timber framing that contain copper must be separated from steel cladding by a strip of wall or roof underlay or DPC.

Cladding to Concrete Junction Detail

Rev: 1

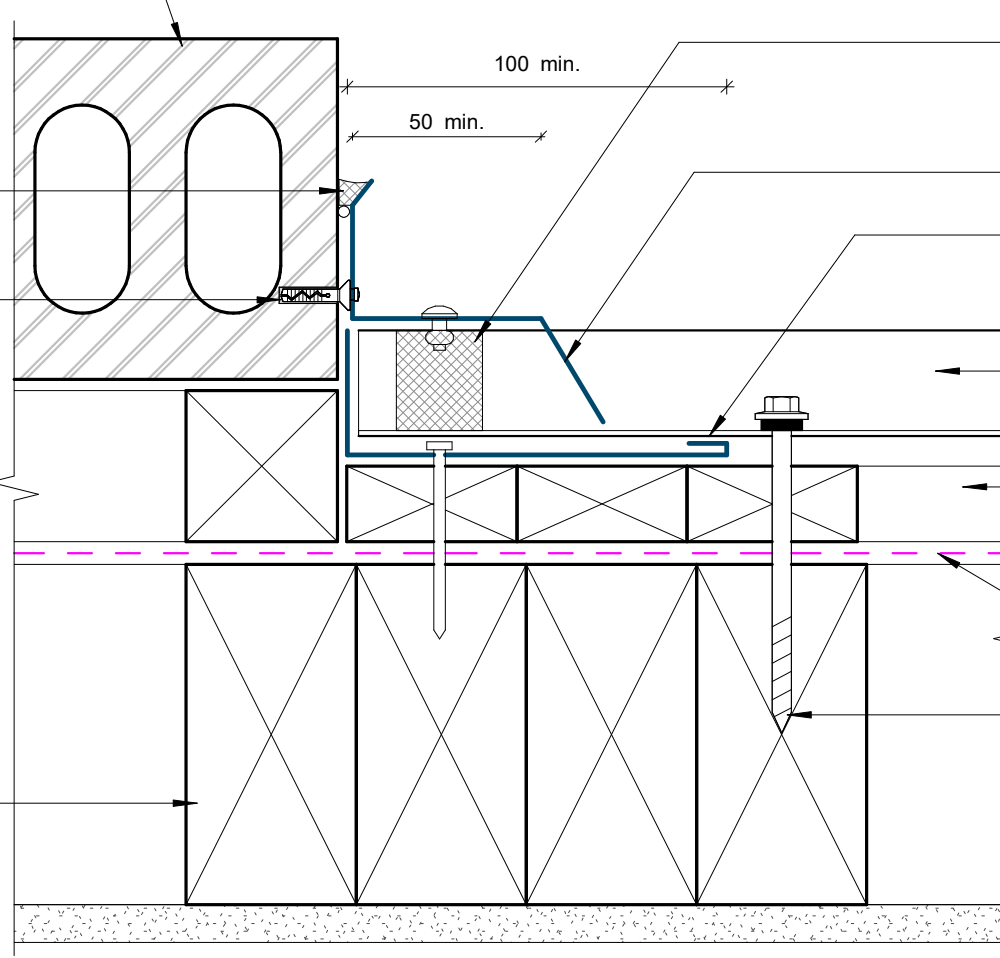
Veedek Residential Horizontal Cladding

Adjoining Brick veneer on cavity
(indicative only)

Mastic seal on backing rod

Rawplug

Wall framing
(indicative only)



Profiled Foam Seal
(when required)

Flashing to match wall cladding
Materials & Fixings as per Dimond
Technical Data, E2/AS1 &
MRM Code of Practice

Pre finished secondary
flashing as required

Dimond Veedek
Horizontal cladding

Cavity Batten

Wall Underlay
(shown dashed)

Prefinished screw with
neoprene washer

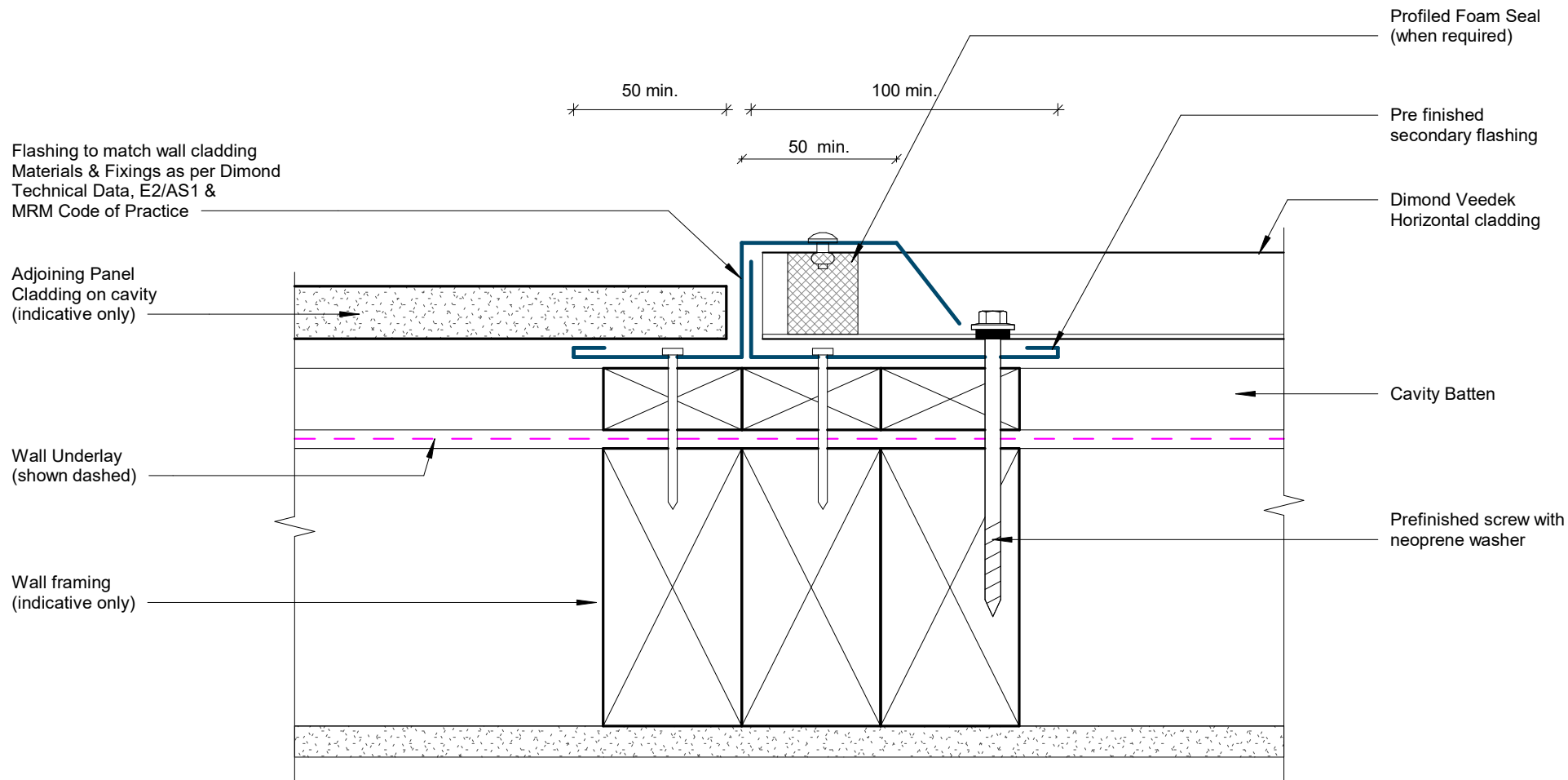
GENERAL NOTE

Cavity battens or timber framing that contain copper must be separated from steel cladding by a strip of wall or roof underlay or DPC.

Cladding to Brick Junction Detail

Rev: 1

Veedek Residential Horizontal Cladding



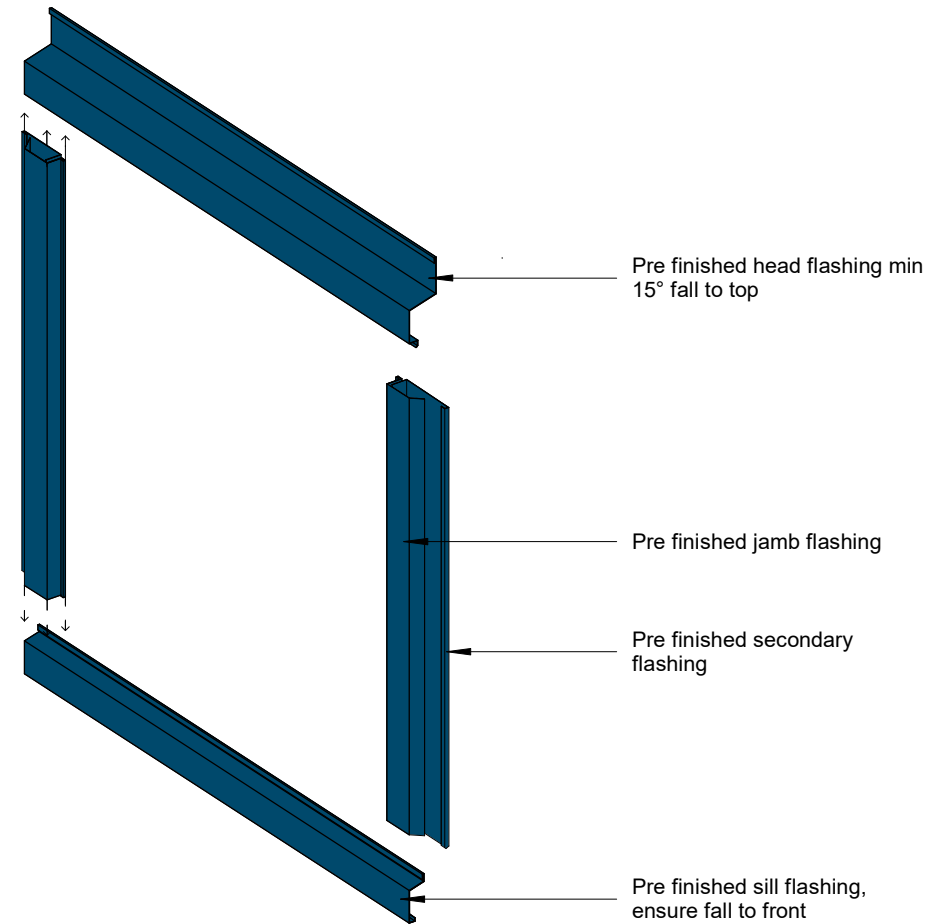
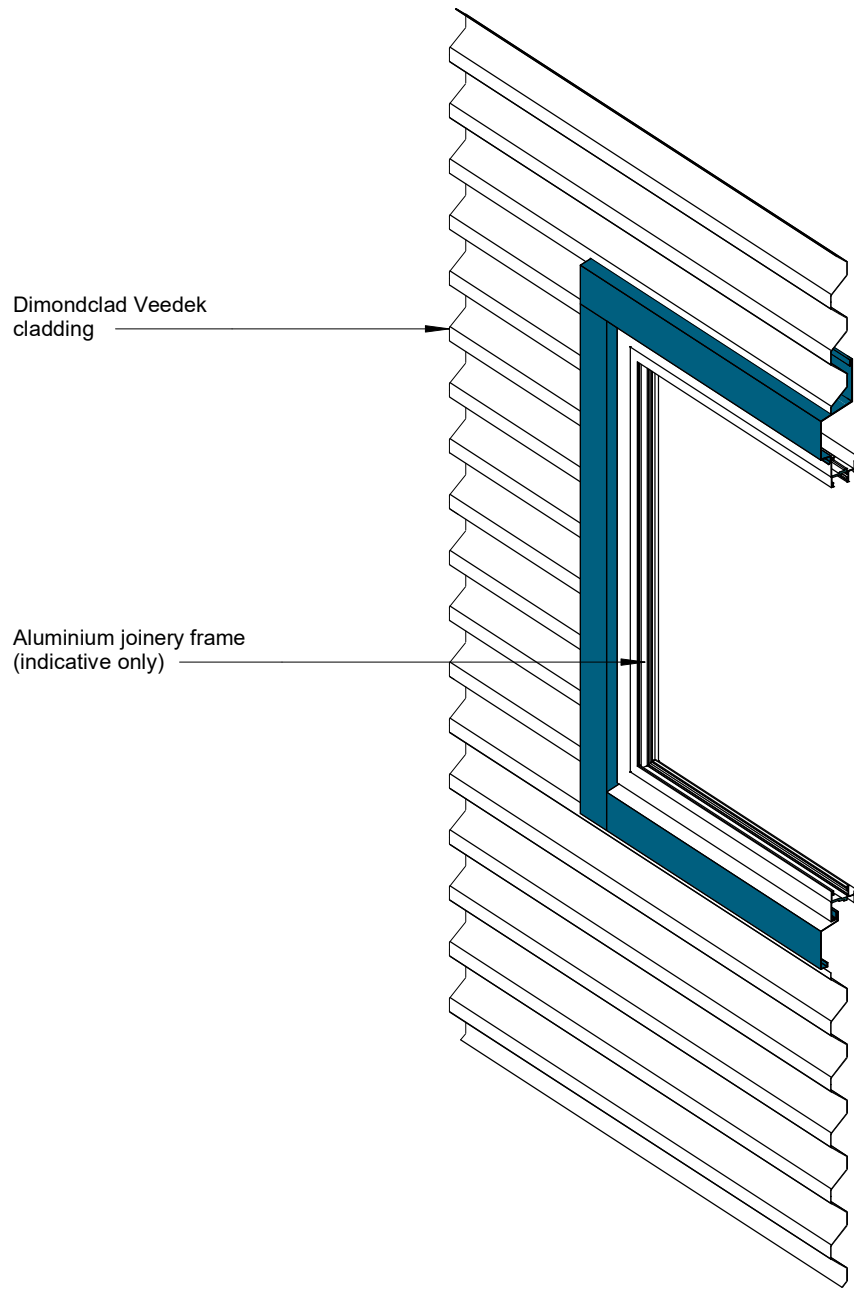
GENERAL NOTE

Cavity battens or timber framing that contain copper must be separated from steel cladding by a strip of wall or roof underlay or DPC.

Cladding to Panel Junction Detail

Rev: 1

Veedek Residential Horizontal Cladding



3D Window Flashing Detail

Rev: 1 Veedek Residential Horizontal Cladding